

## GenFlex Polyiso

Perfect for use with virtually all membrane roofing systems, GenFlex Polyiso is highly efficient thermal insulation board with a polyisocyanurate foam core bonded to fiber-reinforced facers. Approved for new construction or reroofing over virtually all roof deck types.

- ▼ **Installation methods:** Installation adhesive, mechanically attached and loose laid
- ▼ **Standard size:** 4' x 4' (1.22 m x 1.22 m) and 4' x 8' (1.22 m x 2.43 m)

## GenFlex Tapered Polyiso

Tapered to provide a sloping surface, it promotes positive drainage for roofing applications. Approved for new construction or reroofing over steel, wood, noncombustible and certain types of nailable roof decks. GenFlex roof estimating services can design a custom tapered system for any building.

- ▼ **Installation methods:** Installation adhesive, mechanically attached and loose laid
- ▼ **Standard size:** 4' x 4' (1.22 m x 1.22 m)
- ▼ **Thickness:** 1/2" (12.7 mm) min. to 2 1/2" (63.5 mm) max.
- ▼ **Slope per foot:** 1/8" (3 mm), 1/4" (6 mm) and 1/2" (12.7 mm)

## Features and Benefits

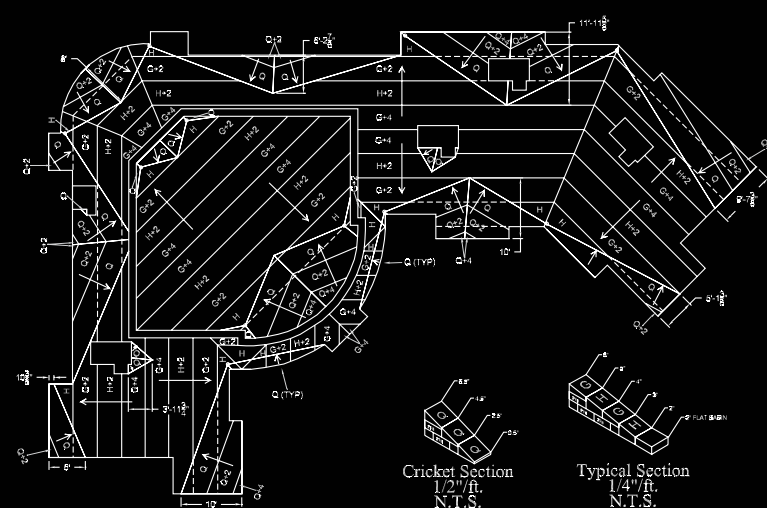
- ▼ Higher R-value per inch than other insulations
- ▼ Produced with roofing components in mind
- ▼ Tested to make sure all codes are met



Polyiso is wrapped with Tuff Wrap to ensure the integrity of the product during shipping and at work sites.

- ▼ Heavy-duty shrink wrap packaging provides a durable protective covering
- ▼ Does not require tarping for transportation or local storage
- ▼ Makes bundles easier to handle

OPTIONS FOR YOUR APPLICATION



## Total Support

We're here for you. GenFlex offers the most comprehensive classroom and hands-on training programs in the industry to help ensure efficient, quality roofing installations. We can provide training anywhere, any time. Our team is equipped with knowledge and expertise to train you effectively. In addition, an extensive library of videos is available on our website.

The GenFlex Winner's Circle™ program is the only initiative of its kind in the industry, rewarding both contractors and distributors for their loyalty to quality GenFlex systems. In addition, our Q3 Contractor programs enable us to identify approved contractors committed to ongoing training, plus excellence in workmanship and service.

Learn more at [www.GenFlex.com](http://www.GenFlex.com)

Visit us online for the latest information on our products, system specifications, technical information, detail drawings, MSDS and product data sheets, plus details on GenFlex training programs. You can also order GenFlex samples and literature.

## Warranties and Code Requirements

A full array of warranties, including full system coverage of membrane, insulation and accessories, is available. Warranted installations are inspected by GenFlex Technical Representatives, ensuring that the roofing system meets all warranty requirements.

GenFlex has systems that have achieved Underwriters Laboratories (UL) classifications and Factory Mutual (FM) approvals. GenFlex systems are also listed by International Code Council (ICC) and Miami Dade County. Refer to the appropriate agency publication for other listings, or contact the GenFlex Roofing Systems technical department.



# GenFlex® Polyiso

Polyisocyanurate Roofing Insulation

GenFlex®  
Single-Ply Solutions for  
Over a Quarter Century™

CB23

250 West 96th St., Suite 150  
Indianapolis, IN 46260  
1-800-443-4272  
[www.GenFlex.com](http://www.GenFlex.com)

© 2008 GenFlex  
Printed in the USA

# PROVEN QUALITY



## Quality products and a common sense approach.

At GenFlex, we provide good, honest roofing materials at reasonable prices. It's how we've always done business. We think everyone deserves a quality product without having to part with too many hard-earned dollars. To us, it's just common sense.

We've been leading the way with a full line of quality roofing products for nearly 30 years. Our commitment to giving you exactly what you need has kept us at the forefront of new roofing products and technology.

We deliver value. Just ask our customers. They know that our proven, durable roofing systems and components are designed to provide you with a high-quality product, easier applications and complete warranty coverage with every installation. It's that simple.

## GenFast™ Attachment Accessories

Our comprehensive line of GenFast fasteners is designed to maximize the performance of GenFlex Polyiso roofing installations.

### #12 Insulation Fastener

- For steel and wood roof decks
- Conforms to FM Spec #4470
- Lengths from 1 5/8" – 8" (41.3 mm – 203 mm)

### #14 Fastener

- For steel and wood roof decks
- Lengths from 1 1/4" – 14" (31.7 mm – 355.6 mm)

### #12 Preassembled Screws and Plates

- For steel and wood roof decks
- Lengths from 2 1/4" – 8" (57 mm – 203 mm)

### NTB Fastener and Plates

- For cementitious wood fiber or gypsum decks
- Excellent pull-out and back-out resistance
- Fastener lengths from 2 1/2" – 10" (63.5 mm – 254 mm)

### CD10 Concrete Fastener

- Designed to secure insulation to structural concrete
- Lengths from 2" – 12" (50.8 mm – 305 mm)

### Lite Deck Fastener and Plates

- For use on cementitious wood fiber decks or gypsum or lightweight concrete
- Fastener lengths from 3" – 12" (76.2 mm – 305 mm)

### Insulation Plate

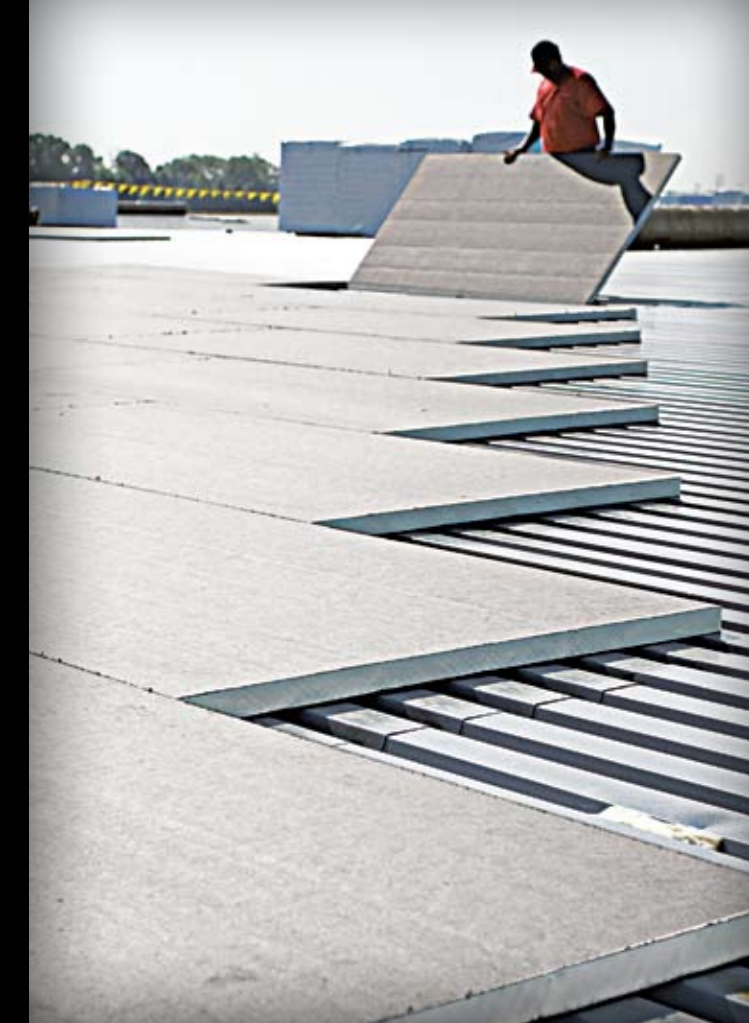
- Recessed plates for use with polyisocyanurate and wood fiberboard
- Flat plates for use on gypsum board and OSB
- 3" (76.2 mm) square shape
- .018" – .021" (.45 mm – .53 mm) thickness

### One-Step Insulation Adhesive

- Highly elastic, two-component chemical-curing
- Part A (isocyanurate) and Part B (Polyol)
- 1.5 L cartridges; 4/case with 8 mixing wands

### Low-Rise Insulation Adhesive

- For bonding deck, base sheets, insulation boards and smooth built-up roof
- 3 gal. (11.4 L) pails



## GENFLEX POLYISO TEST DATA

| Physical Property           | ASTM Test | Typical Values  |
|-----------------------------|-----------|---|
| Compressive Strength*       | D1621     | 20 psi (138 kPa)  |
| Density                     | D1622     | 2 pcf (32 kg/m <sup>3</sup> )                                 |
| Dimensional Stability       | D2126     | < 2%  |
| Moisture Vapor Transmission | E96       | < 1 Perm [ $< 57.5 \text{ ng (Pa}^* \text{s}^* \text{m}^2)$ ] |
| Water Absorption            | C209      | < 1% by Volume  |
| Service Temperature         | n/a       | -100° – 250°F (-73° – 121°C)                                  |
| <b>LEED® Information</b>    |           |   |
| Recycled Content            |           |   |
| Post Consumer               |           | 19% Avg.  |
| Post Industrial             |           | 15% Avg.  |

\*25 psi (172 kPa) available upon request.

### Manufacturing Locations

Aurora, CO; Bristol, CT; Corsicana, TX; Covington, KY; DeForest, WI; Jacksonville, FL; Salt Lake City, UT; Youngwood, PA

## GENFLEX POLYISO PRODUCT DATA

| Insulation Thickness |       | LTTR R-Value* |
|----------------------|-------|---------------|
| inches               | mm    |               |
| 1.00                 | 25.4  | 6.0           |
| 1.25                 | 31.7  | 7.5           |
| 1.50                 | 38.1  | 9.0           |
| 1.75                 | 44.5  | 10.5          |
| 2.00                 | 50.8  | 12.1          |
| 2.30                 | 58.4  | 14.0          |
| 2.50                 | 63.5  | 15.3          |
| 2.80                 | 71.1  | 17.2          |
| 3.00                 | 76.2  | 18.5          |
| 3.25                 | 82.6  | 20.1          |
| 3.50                 | 88.9  | 21.7          |
| 3.75                 | 95.3  | 23.4          |
| 4.00                 | 101.6 | 25.0          |

\*Long-term thermal resistance (LTTR) values provide a 15-year time-weighted average in accordance with CAN/ULC-S770.

## GENFLEX POLYISO FLUTE SPAN OVER METAL DECKS

| Thickness   |             | Span   |        |
|-------------|-------------|--------|--------|
| inches      | mm          | inches | mm     |
| 1.00        | 25.4        | 2 3/8  | 60.33  |
| 1.25        | 31.7        | 4 3/8  | 111.13 |
| 1.50 – 3.80 | 38.1 – 96.5 | 4 3/8  | 111.13 |
| 4.00        | 101.6       | 4 3/8  | 111.13 |

### Specification Compliance

ASTM C1289, Type II, Class 1  
UL Classified  
FM Class 1 Approved  
Manufactured in an ISO 9002 Registered Facility  
CAN/ULC-S704

